

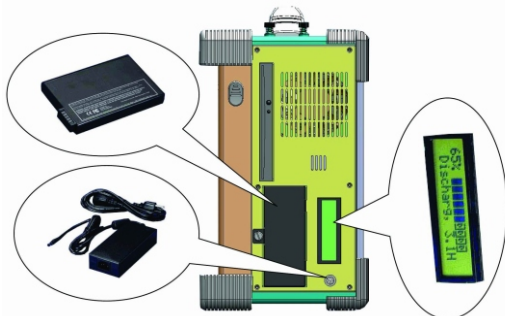
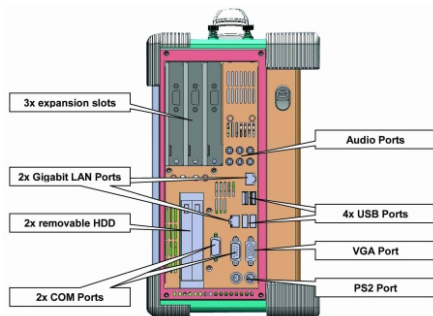
ARP945-B

15" LCD, CORE 2 DUO PROCESSOR
RUGGED MULTI-SLOT PORTABLE BATTERY COMPUTER



Features

- All-in-one design rugged portable computer
- Compact Size Lightweight Design
- Built-in 15" LCD display with tempered glass
- 2x 95W Li-ion battery packs, 100W adapter
Up to 4 hours battery life
- Mini-ITX MB, Intel Core 2 Duo T7500 Processors
- Industrial Keyboard multi-language with touchpad
- 3x PCI-E (x8) full-length expansion slots
Option 3x PCI-X or 2x PCI, 1x PCI-E (x16)
- Built-in 500GB, Support 2x 2.5" removable HDD
- Dual Gigabit Ethernet, 2x COM Port
- Carrying case to manage portable PC with ease



Specification

Model No	ARP945-B
Construction	Rugged Aluminum Construction with rubber corners
CPU	Intel Core 2 Duo T7500 (2.2GHz) Processors
Chipset	Intel Gm45 Chipset + ICH9M
Slot	3x PCI-E (x8) full-size slots Option: 3x PCI-X full-size slots Option: 2x PCI, 1x PCI-E (x16) full-size slots
Display	15" LCD display, 1024x 768, 16.2M, MTBF: 50,000 hrs 250 nits, Anti-reflection tempered strengthen glass
Memory	2x 2GB RAM
HDD	1x 500GB 2.5", 7200 rpm SATA HDD Support 2x 2.5" Removable SATA
CDROM	1x Slim DVD-RW
Interfaces	4x USB 2.0 Ports, 1x VGA Port, 2x Gigabit LAN, 2x COM port, PS2 KB/MS, Audio
Audio	ICH9M built-in audio HD audio w/ Realtek ALC888
Speaker	Built-in amplified 2x 3W speakers
LAN	Dual Gigabit LAN, RJ-45 connector
KB/MS	87-key industrial keyboard with touchpad
PSU	2x 95W Li-ION battery Pack (Hot-Swappable) Up to 4 hours battery life 100W, 90~264VAC Adapter
Dimension	412x 305x 184 mm (Wx Hx D)
Weight	9 kgs
Carrying Case	Padded carrying case with wheels

Environmental Factors

	Operating	Non-Operating
Temperature	0°C~50°C	-20°C~60°C
Relative Humidity	10%~90%	10%~95%
Shock	10g, 11ms, half-Sine	30g, 11ms, half-Sine
Vibration	10-500Hz (0.4 Grms)	10-500Hz (1.12 Grms)
Approval	CE, FCC, RoHS	

Ordering Information

ARP945-XB15USA

15" LCD, T7500 CPU, 2x 2G RAM, 3 PCI-E (x8) slots, 500G HDD, DVD-RW, Battery Packs, Carrying case

ARP945-XB15USB

15" LCD, T7500 CPU, 2x 2G RAM, 3 PCI-X slots, 500G HDD, DVD-RW, Battery Packs, Carrying case

ARP945-PB15USC

15" LCD, T7500 CPU, 2x 2G RAM, 2 PCI, 1 PCI-E (x16) slots, 500G HDD, DVD-RW, Battery Packs, Carrying case

Note: Keyboard layout: CH, FR, GR, KR, RU, SP, UK, US

Option

- Intel T9400 (2.53GHz)
- Touch Screen
- 15.4", 1920x 1200 resolution
- Sunlight Readable
- Air Cargo